



Name: _____

Roll No.: _____ Std 4 Div: _____

Date: _____

1. Identify and describe the tree shown below in your own words.

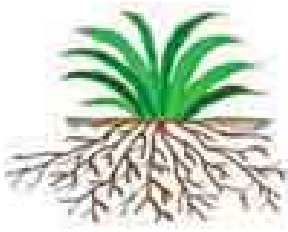


2. Identify and explain the root type for the pictures given below.

(a)



(b)



3. Give 2 examples of each

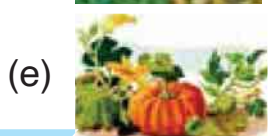
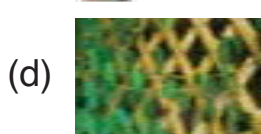
(a) Storage roots:

(b) Plants having adventitious roots:

(c) Plants having simple leaves:

(d) Plants having compound leaves:

4. Match the following.



(i) Creeper

(ii) Climber

(iii) Tree

(iv) Shrub

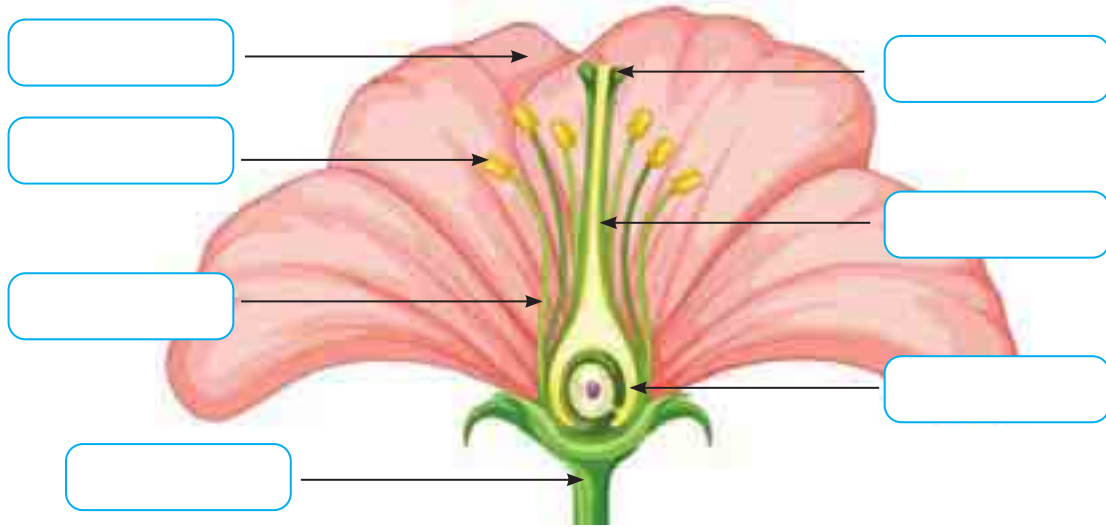
(v) Herb

5. Explain the classification of plants based on their stem.

6. Differentiate between compound leaves and simple leaves.

Compound leaves	Simple leaves

7. Label the parts of flower and explain them.



8. Answer the following questions.

(a) Write the use of breathing roots in mangroves.

(b) How are plants classified on the basis of flowers?

(c) What are storage roots?

(d) How are seasonal plants different from perennial plants?

9. Give 2 examples of the followings.

(a) Scented flowers: _____

(b) Unscented flowers: _____

(c) Terrestrial plants: _____

(d) Aquatic plants: _____

(e) Perennial plants: _____

(f) Seasonal plants: _____

Self-assessment

✓ the picture that shows how you worked today.

I liked doing this work.



yes



so-so



no

I found this work easy.



yes



so-so



no

Teacher's remark:

.....